

SOLSTICE HQ

8+ PERSON CAMPING TENT

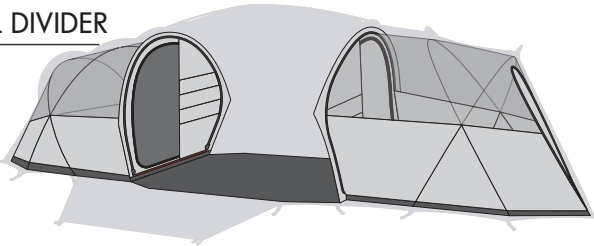


CHECKLIST

YOUR MACPAC TENT BAG WILL INCLUDE:



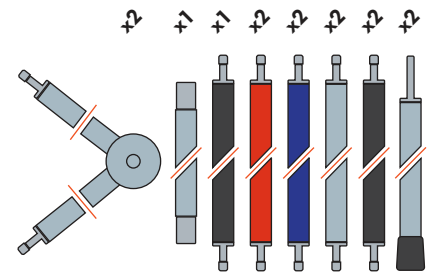
2 INNER ROOMS
1 WALL DIVIDER



THE INNER AND DIVIDER WILL BE SEPARATE IN THE BAG.

14 POLES

- 2 SILVER V SECTIONS
- 1 SHORT SILVER
- 1 SHORT BLACK
- 2 ORANGE
- 2 BLUE
- 2 SILVER
- 2 BLACK
- 2 AWNING



46 PEGS

18 GUY CORDS

MOST OF THE GUY CORDS WILL ALREADY BE ATTACHED TO THE FLY.

1 WASHING LINE



CHOOSING A CAMPSITE

- Select a flat site, clear of sharp objects like rocks and branches. If possible do not pitch the tent in a hollow — dew settles in hollows, potentially increasing the moisture that may collect on your tent overnight.
- Please take extra caution when pitching your tent in high winds. We recommend having a helper to hold the tent until it is fully pegged down.

CARE AND CLEANING

PACKING YOUR TENT

Always dry the fly, inner, pegs, poles and guy cords completely before storing to prevent damage caused by mildew and mould. Shake gently while still pitched to remove surface water. Clear the floor of the inner of any twigs or stones.

Remove all pegs and scrape the dirt off them. Do not zip the door right up otherwise air will be trapped inside making your tent harder to roll.

WASHING YOUR TENT

If your tent is very dirty, clean it using a sponge, water and pure, non-detergent soap. Do not use detergents or solvents. Do not machine wash. Rinse thoroughly after cleaning.

UV DAMAGE

Do not leave the tent pitched in direct sunlight for longer than is necessary. Ultraviolet light will eventually weaken the fabric and damage the waterproof coating. UV damage is not covered by warranty. Do not pitch your tent on hot surfaces as this can cause permanent blistering of the fabric. This type of damage is not covered by warranty.

REPAIRING YOUR TENT

Fabric patches and a pole repair sleeve are included with your tent. Simply glue a patch to the outer of the fly. In the event of a pole breakage, tape the pole repair sleeve over the damaged section. These are temporary repairs and you should get your tent fixed by the Macpac repair team as soon as possible. For more information on warranty and repairs please visit our website.

LABELS

You will see a number of icons identifying features inside your tent, here is what they mean:



The light bulb label identifies loops that are ideal for hanging lights.



The sun and plug label identifies zips that you can thread your solar power cord through.



The feather label identifies pockets that should only hold lightweight items.



The hanging shirt label identifies some of the loops for stringing up the washing line. Be careful not to overload.

WARNING: KEEP OPEN FLAMES AND FIRES AWAY FROM THIS TENT

MACPAC CHOOSES NOT TO USE ANY FIRE RETARDANT TREATMENTS ON OUR TENTS, AS THESE ADDITIVES MAY BE HARMFUL TO YOUR HEALTH AND THE ENVIRONMENT. USE COMMON SENSE WHEN COOKING NEAR YOUR TENT.

For more information regarding your Solstice Tent visit our website

macpac.co.nz | macpac.com.au

PITCHING YOUR TENT

UNPACK YOUR TENT

You will find the best way for you to pitch your tent, but the following technique is the one we have found most successful.

Remove all items from the bag, checking you have all the parts listed on your checklist.

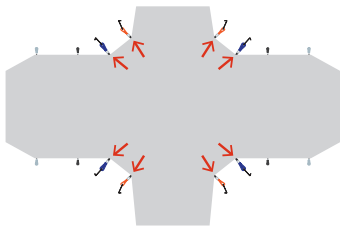
Gently unfold the tent poles. Do not flick the poles open as this can cause damage and shorten their life. Make sure all the poles are fitted together correctly and be careful of your surroundings as the ends can flick out.

Your tent uses a combination of colour-coded pole sleeves to attach the poles to the fly e.g. the silver poles are inserted into the sleeves with silver binding and the ends go into the plates with silver webbing loops.

PLEASE NOTE: This is a large tent, therefore we advise you have at least one extra person to help support the structure while pitching. This will avoid any damage to the poles during pitching – when they are most vulnerable.

1. PEGGING DOWN

Start by laying out the attached fly, ensuring the webbing is on the underside. Rotate your tent appropriately for your site and peg out the blue and orange loops ensuring the floor in the central room is tensioned evenly.

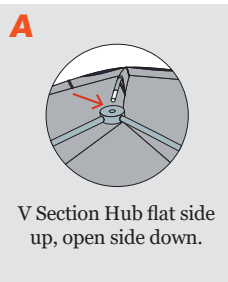
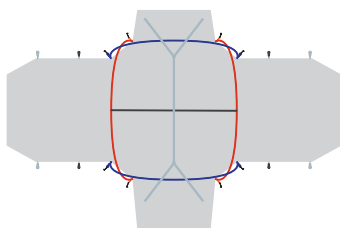


2. INSERTING POLES

Start by inserting both blue and orange poles into their appropriate sleeves – use one hand to guide the pole and one hand to gently push it through the sleeve. Refrain from pulling the poles as this may cause them to separate in the sleeve.

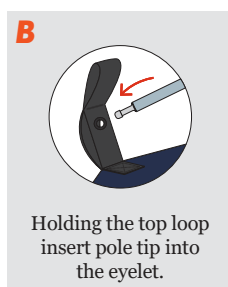
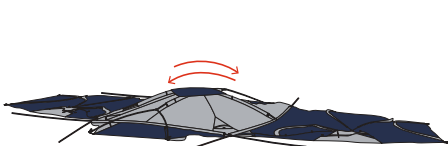
Then insert the short black and short silver poles into their appropriate sleeves in the centre.

Connect the two V sections to each end of the silver pole ensuring the flat section of the hub faces up (A).



3. CENTRE ROOF

To tension the roof, insert each end of the V poles into the eyelet on the padded webbing above the doors (B). Then insert the black poles into the eyelet located on the webbing in the centre on the orange pole's sleeve. Ensure that the poles curve up when you do this. Having a person inside the tent can help the poles curve in the right direction.

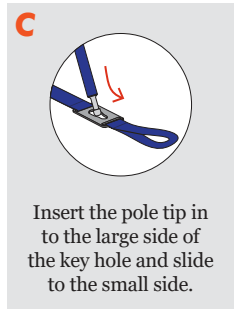


4. MAIN ROOM

To lift the central room start by inserting one end of a blue pole into the plate as shown in the diagram (C). Pushing from the other end lift the pole while keeping pressure on the end in the plate. As it lifts, slide the sleeve along the pole so that it is centred before trying to insert the other end. The pole will fit easily when the pole is centred – forcing the pole may cause it to bend.

Attach the hooks to the pole once the pole is standing.

Repeat this for the second blue pole and then the two orange poles.



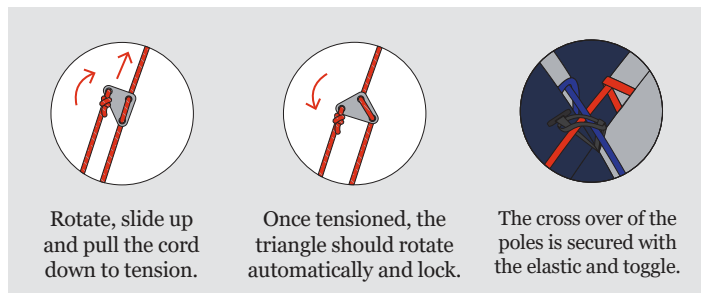
5. X POLES

Insert and then lift the two long black and long silver poles into their appropriate sleeves on either side of the central room using the same technique. Attach the hooks, once the poles are standing.



6. FINAL PEGGING OUT

Pull out each of the X sections so that the fly is evenly tensioned. Your tent may have moved a little during pitching, go around all the peg points – adjusting the tension of the fly where needed – and peg out all of the doors. Finally, peg out the guy cords in line with their adjacent poles and tension them.



7. INNER

To attach the inner, start with the buckles at the back of the tent. Then move up using the toggles and O rings to attach the inner to the fly. Work your way forward until all buckles and toggles are attached with all parts evenly tensioned. Finally attach the central wall using two zips, ensuring the end of the zips are properly inserted before sliding them around. Your tent also come with a wall divider if you would like to use one of the bedrooms for gear storage.

