

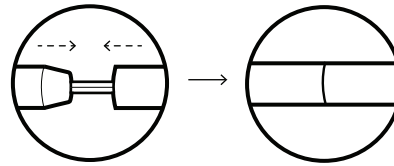
ZA3 TREKKING POLE INSTRUCTIONS

KEY PARTS:

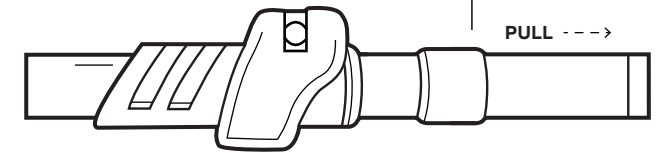
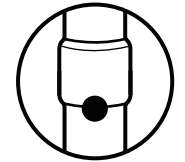
- 2 x Trekking Poles
- 2 x Baskets
- 2 x Rubber Caps

SET UP STEPS

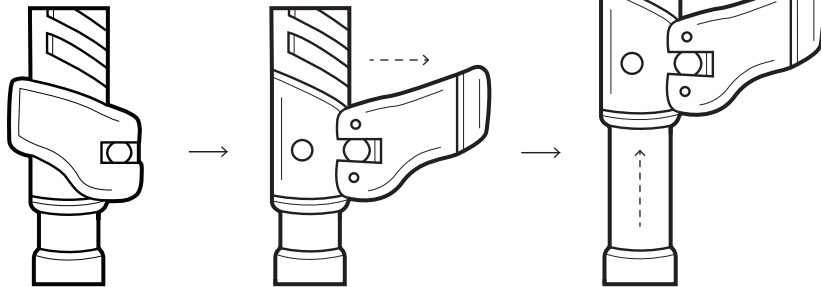
1 Connect all pole sections by inserting each section into its corresponding shaft segment.



2 Hold the handle in one hand. With your other hand, locate the section circled below and pull it firmly outward until it locks in place.

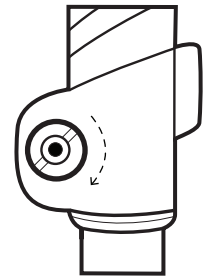
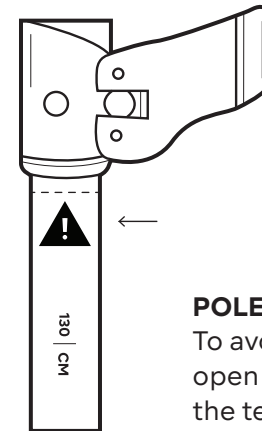


3 Open the lever lock system and adjust the pole height to suit your needs.



Max height adjustment 130 cm. Take care when extending the trekking poles to the max height.

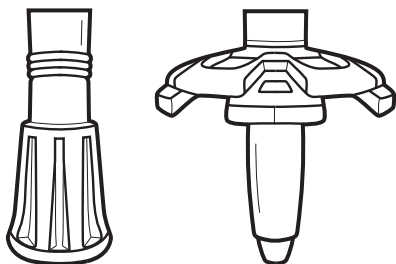
NOTE: Make sure to **STOP** at **130 CM** mark to prevent force that can damage or break the pole. The pole may be extended past this mark for repair purposes only.



POLES NOT LOCKING?

To avoid handle sliding, open the lever lock system and adjust the tension screw on the outside by hand.

4 Select the appropriate end cap based on the terrain.



KEY FEATURES

BASKETS

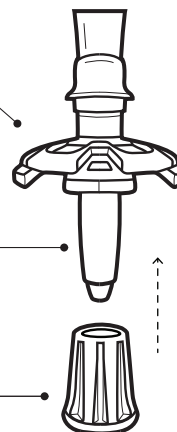
Ideal for use in snow or muddy terrain

TUNGSTEN TIP

Recommended for rocky or icy terrain

RUBBER CAP

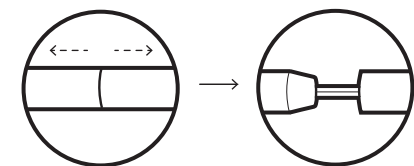
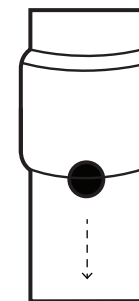
Recommended for flat, easy terrain



COLLAPSING THE POLES

TO COLLAPSE THE POLES

Push the steel ball to retract the first section.



Detach the remaining sections, then fold and secure with self-fastening straps.

